

FEDERAL GOVERNMENT OF SOMALIA

SOMALIA DURABLE SOLUTIONS PROGRESS (DSP) SURVEY 2024-2025: KEY FINDINGS

PHASE ONE: BANADIR REGIONAL ADMINISTRATION,
SOUTH-WEST STATE & JUBALAND STATE

This summarized report presents the key findings identified in the Durable Solutions Progress (DSP) Survey. This serves as a complementary overview of results from the first phase of the survey, and thus is not exhaustive of all findings. All information products, including a full analysis report, city-level factsheets, and an interactive dashboard can be accessed by scanning the below QR code, and are available at [this link](#).



OVERVIEW

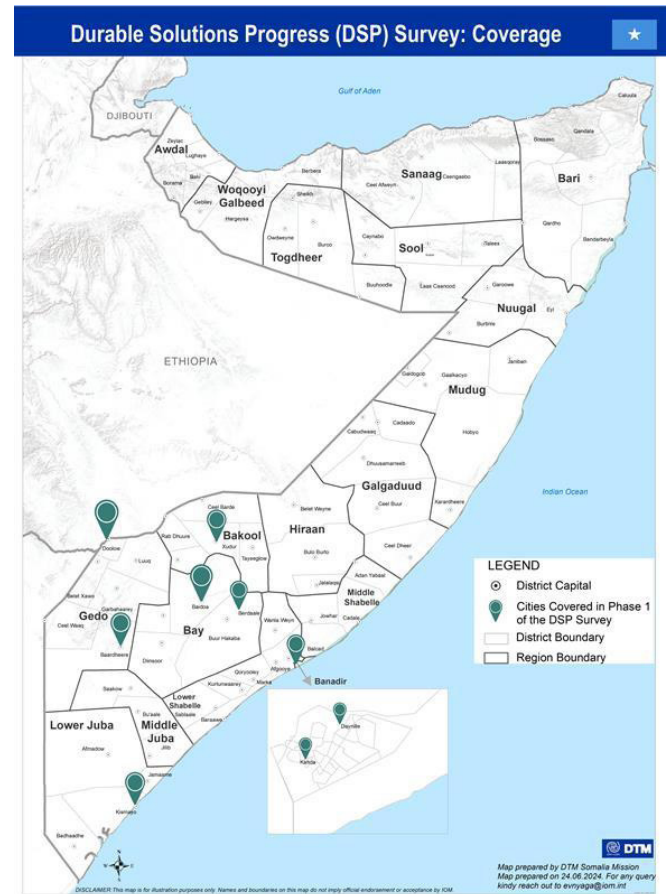
Starting in 2024, the Federal Government of Somalia's (FGS) Ministry of Planning, Investment and Economic Development (MoPIED) is leading the implementation of the Durable Solutions Progress (DSP) Survey. Implemented in coordination with Federal Member States (FMSs) and local authorities, and supported by IOM and partners, the DSP Survey aims to support the implementation of the **National Durable Solutions Strategy (NDSS)** through providing representative data amongst IDPs and host community households. The survey also closely aligns with the **Solutions Pathways Action Plan**, which was launched in September 2024.

The survey is carried out in the country's urban centers that host IDPs. Field implementation is coordinated by federal, state and local authorities, with data collection supported by IOM's Displacement Tracking Matrix (DTM) unit as well as the Danwadaag Consortium and the Saameynta Joint Programme.

The first phase of this survey was implemented between April and June 2024, covering 60% of the country's IDP caseload with representative data. The next round will follow in 2025, taking the coverage to around 75%.

A full description of the DSP Index can be found on the following page, and the complete table of key summary indicators across all assessed phase one cities can be found on page seven.

Map 1: Durable Solutions Progress (DSP) Survey Coverage (Phase 1)



IMPLEMENTATION OVERVIEW

The DSP Survey is led by the Federal Government of Somalia (FGS) in partnership with Federal Member States (FMS) and local authorities. Technical and field support is provided by IOM's DTM and the Danwadaag Consortium, with co-funding provided by the Saameynta Joint Programme. The first phase covered eight urban locations of Daynile, Kahda (Banadir), Baidoa, Berdaale, Xudur (South-West State), Doolow, Baardheere and Kismaayo (Jubaland). The next phase will be implemented in the states of Galmudug, Hirshabelle and Puntland in 2025.

GOVERNMENT-LED IMPLEMENTATION FRAMEWORK

Government-led (Federal, State, Local)



Multi-partner implementation framework



Co-funded by multiple donors

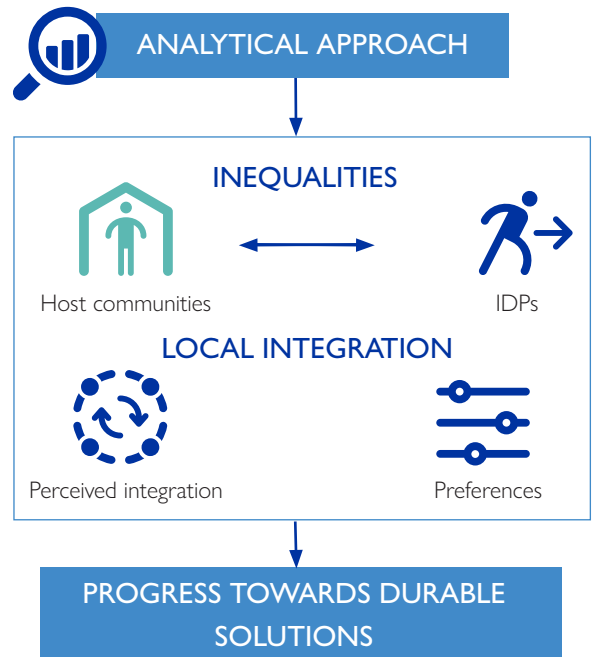
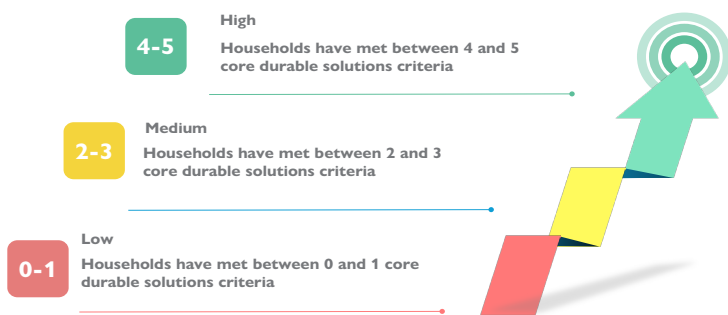


A SOLUTIONS MEASUREMENT FOR SOMALIA: THE DSP INDEX

The DSP Survey tool was designed in line with the **National Durable Solutions Strategy (NDSS)** as well as the **National Solutions Pathways Action Plan**. Indicator modules also align with the **Inter-Agency Standing Committee (IASC) Framework on Durable Solutions for IDPs**, and sub-criteria from the **International Recommendations on IDP Statistics (IRIS)**.

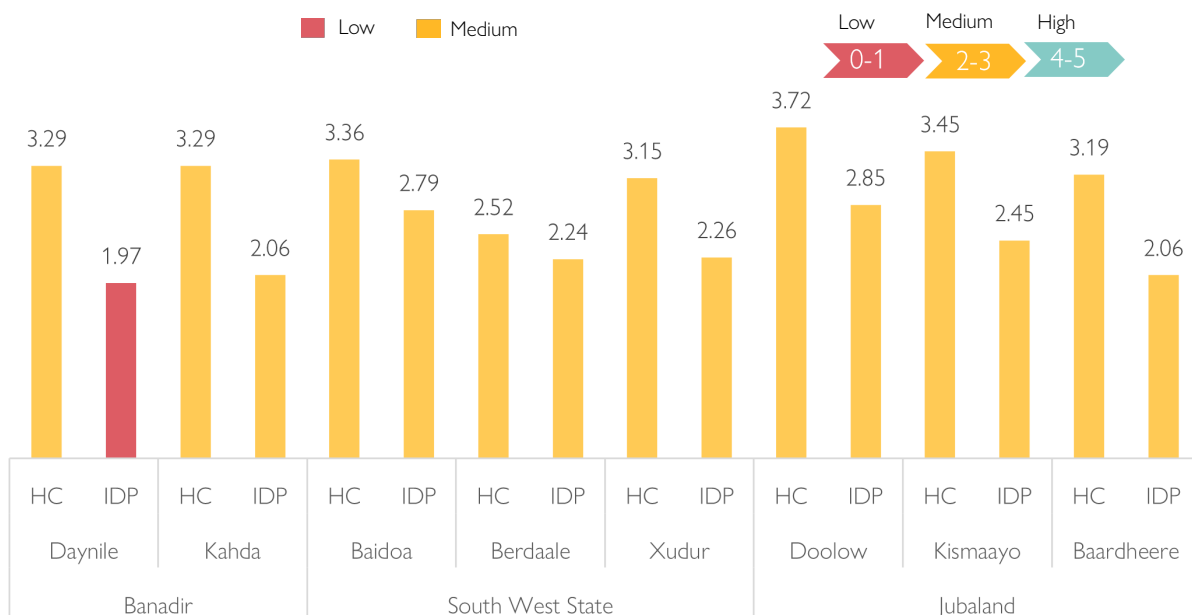
The index is based on a composite analysis model that identifies the average number of “core” five IASC criteria that households have met in each surveyed location. As displayed in the diagram below, the first five IASC criteria and relevant IRIS sub-criteria (which align with the NDSS Monitoring and Evaluation Framework Indicators), are selected for the index model since they are often best collected through household surveys. Refer to the DSP Survey Terms of Reference [here](#) for an overview of the methodology.

Diagram: DSP Index – Measuring Progress Towards Durable Solutions (High, Medium, Low)



DSP INDEX RESULTS PER CITY

As shown below, both IDPs and host communities in all phase one cities are achieving “medium” progress towards solutions, with IDPs in Daynile the only exception. Notably, in all cities, host communities score higher than IDPs on the index scale reflecting the widely-recognized reality of unequal access to services between the two population groups – noting the non-displaced continue to face barriers to services and livelihoods despite being on average better off.

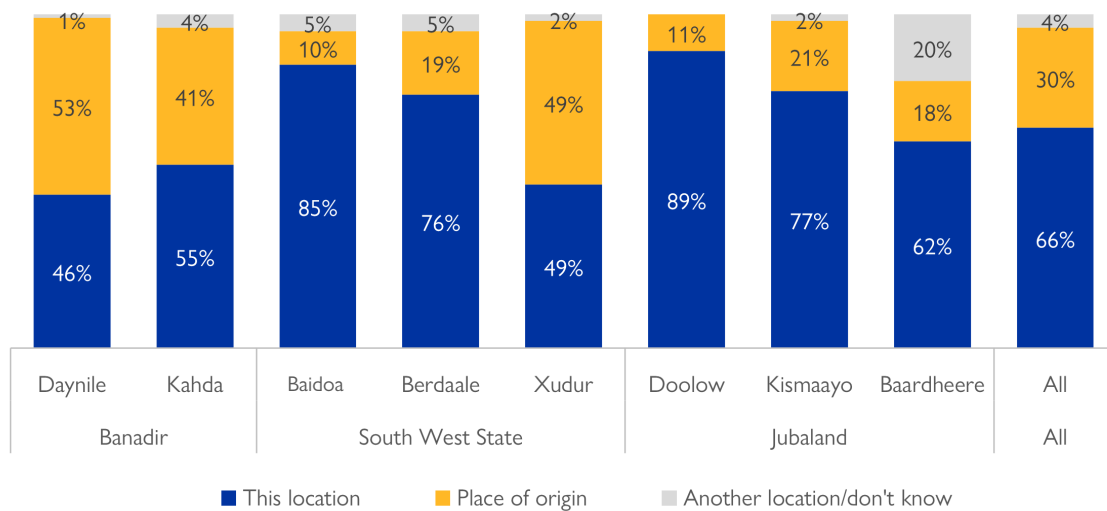


OVERVIEW OF KEY FINDINGS

PREFERENCES

- » Overall, **two thirds of IDPs (66%)** overall reported a preference to **locally integrate** in the current location long-term. A further 30 per cent would prefer to return to their area of origin, with 4 per cent opting to either move to another location or reporting to be unsure.
- » An apparent relationship between **positive conditions and preferences for long-term settlement** was identified. IDP households in Doolow (89%) and Baidoa (85%) reported a preference to integrate in the current location at the highest rates. These two cities also achieved the highest DSP Index scores for IDPs (Doolow 2.85; Baidoa 2.79).
- » **Households with significant unmet needs were more likely to report a preference to return to their area of origin.** Reported preferences to return to their area of origin were notably high in Banadir's districts of Daynile (53%) and Kahda (41%). Consistent with the above index findings, IDPs in these two urban centers scored the lowest DSP Index scores (Daynile 1.97; Kahda 2.06).

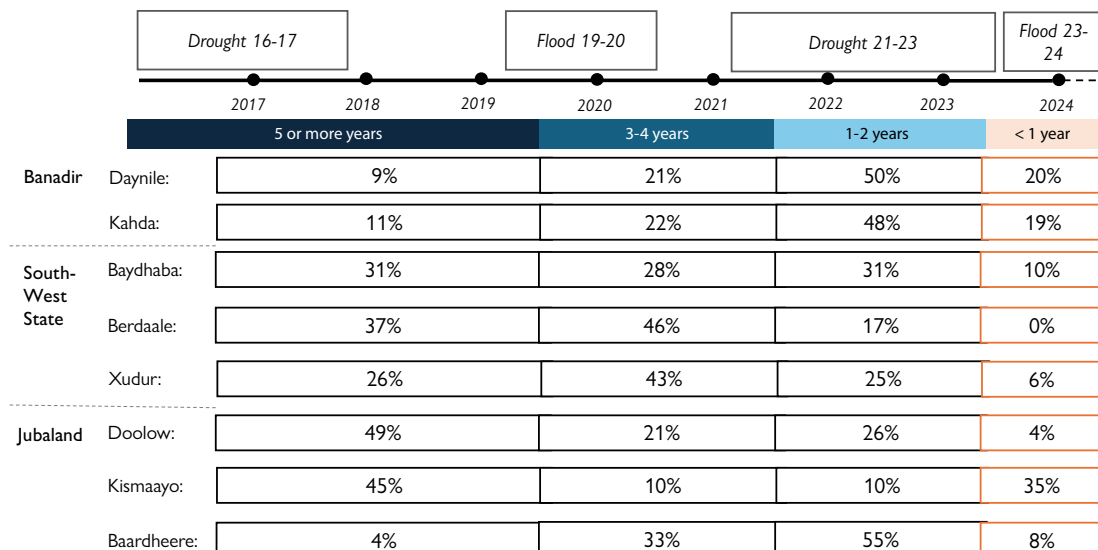
Figure: % of IDP households reporting preferred locations to settle long-term, by city



LENGTH OF DISPLACEMENT

- » A significant variation in length of displacement was reported across cities. Proportionally, Kismaayo has received the highest share of IDPs in the past 12 months at 35 per cent, followed by Daynile (20%) and Kahda (19%). By contrast, the highest rates of IDPs living in protracted displacement (5+ years in the current location) were recorded in Doolow (49%) and Kismaayo (45%).

Diagram: Length of displacement, by city



IASC 1. SAFETY AND SECURITY

- » **Access to safety and security amongst IDP and host community households varies across cities.** In the cities of Daynile, Kahda, Baidoa, Xudur and Doolow, more than 80 per cent of IDP and host community households reported experiencing no violent incidents in the previous six months. By contrast, in Baardheere, just 67 per cent of IDPs and 77 per cent of the host community reported not experiencing violence.
- » **Across the assessed cities, around nine out of ten households enjoy freedom of movement within the urban center.** The only exception is Daynile, where 79 per cent of IDPs enjoy freedom of movement.
- » **Rates of employing climate adaptation measures vary**, and are most common in Baidoa (48% IDPs, 48% HCs) and Kismaayo (33% IDPs, 39% HCs). Less than 35 per cent of households (both groups) reported taking them in all other cities. The most common adaptation measures include migration, digging trenches around the house, and clearing drainage.

IASC 2. ADEQUATE STANDARD OF LIVING

- » Across all cities, **a key barrier to solutions amongst IDPs centers around inadequate standards of living. Host communities in all cities are more likely to access basic services – although in some cases this does not constitute high access**, highlighting the need to ensure development interventions support all displacement-affected communities.
- » Concerningly, **in all cities aside from Daynile and Kahda, less than 50 per cent of households (both IDPs and HCs) reported facing challenges accessing sufficient food.** Baardheere is of particular concern, with just 10 per cent of IDPs and 20 per cent of HCs reporting being food secure.
- » Under **40 per cent of IDPs in all cities are residing in transitional or durable shelters** – with the lowest rates observed in Berdaale (2%) and Xudur (4%). Most IDPs instead reside in temporary emergency shelters such as tents/*Buuls*. By contrast, almost all host community households live in durable shelters made of brick, mud or CGI - with Berdaale an exception, where just 56% of HC households live in such shelters.
- » **Access to medical services represents another challenge in some cities – especially Berdaale and Baardheere**, where just 40 per cent of IDP households reported access to healthcare services in the previous three months.
- » Unequal access to water was observed across cities. **The lowest rates of access to sufficient water were observed in Berdaale (53% IDPs, 68% HCs), and amongst IDPs in Baardheere (55%), Kismaayo (69%) and Xudur (70%).**
- » In all cities, **below 60 per cent of IDPs reported access to any type of electricity.** The lowest levels of access were recorded amongst IDPs in Xudur (12%) and Berdaale (26%). Notably, host community households in all cities have significantly higher access to electricity compared to the displaced population.

IASC 3. ACCESS TO LIVELIHOODS

- » Limited access to livelihoods represents a key barrier to solutions for both IDPs and host communities, highlighting the need for sustainable employment to be realized for both groups and across all cities.
- » **In all cities, below 40 per cent of IDP and host community households reported engaging in sustainable income generation activities such as salaried work, selling animals or animal products, selling crops, or running a business.** The poorest access to livelihoods was reported amongst IDPs in Kismaayo (5%), followed by Daynile (6%) and Kahda (9%).
- » In all cities, **less than half of both host communities and IDPs reported positively on economic security indicators - including receiving more than 50 USD per month in the past three months, being free of debt, and having a lower reliance on humanitarian assistance.** Locations of particular concern include Daynile, Kahda, Doolow and Baardheere, where less than 10 per cent of IDPs reported positively on these indicators.

IASC 4. HOUSING, LAND AND PROPERTY (HLP)

- » Housing, land and property (HLP) indicators tell a nuanced story, with exposure to **eviction risk varying between groups and across cities**. Strengthening households' security of tenure is key to breaking the cycle of displacement, with many forced to move due to evictions.
- » Amongst IDPs, **the lowest risk of eviction is observed in Doolow, with 77% of households showing high rates of HLP documentation possession and low involvement in disputes over land**. Baidoa (68%) and Kismaayo (62%) scored the next highest on HLP indicators.
- » This contrasts with **significantly higher eviction risk in the remaining cities - especially Daynile and Baardheere, where respectively just 32 per cent and 37 per cent reported positive HLP conditions, highlighting insecure tenure**.

IASC 5. ACCESS TO DOCUMENTATION

- » **Poor access to legal documentation is a major challenge in all cities, highlighting a challenge for service delivery**. Aside from Doolow and Bardheere, less than 40 per cent of households (IDPs and host communities) reported the possession of any type of personal identification such as a birth certificate or passport. **The lowest rates of documentation possession were observed amongst IDPs in Berdaale (1%), Daynile (2%), Xudur (3%), and Kahda (6%)**.

IASC 6. FAMILY REUNIFICATION

- » **Survey findings suggest the forced separation of families is a minor issue facing displacement-affected communities. The only exception is Baardheere, where 39 per cent of households indicated struggling with the forced separation of family members**. In all cities, almost all the households who do face this challenge reported accessing reunification or tracing services from government authorities or humanitarian organisations.

IASC 7. PARTICIPATION IN PUBLIC AFFAIRS

- » **Limited participation in public affairs also poses a challenge to solutions, with less than a third of households in most cities reporting low engagement with community groups, including those which facilitate collective decision making on local affairs**. The only exception is Baardheere, where around two thirds of households from both groups reported to participate in community groups.

IASC 8. ACCESS TO EFFECTIVE REMEDIES AND JUSTICE

- » In all locations, **more than 80 per cent of households reported access to legal services to defend their rights** – with a strong reliance on police forces, elder councils (Xeer), and community leaders for this important service. However, this high rate may be attributed to a limited awareness of additional types of justice mechanisms that exist in Somalia.

SOCIAL COHESION AND INTEGRATION

- » **Overall, 64 per cent of IDPs indicated feeling “very integrated” or “integrated” in the current location**. The highest rates of positive integration perceptions were recorded in Kismaayo (71%), Kahda (72%), and Doolow (76%).



OVERVIEW: KEY SUMMARY INDICATORS

As described above, the DSP Index is based on measuring solutions progress amongst IDPs and host communities, based on the “core” five IASC criteria, and in close alignment with the NDSS and the Solutions Pathways Action Plan. Under each of the eight IASC criteria sit a total of 19 IRIS sub-criteria.

Using data from the DSP Survey, the table below presents aggregated findings for each criteria and sub-criteria. Analysis is presented for each of the eight DSP Survey phase one cities, disaggregated by IDPs and host communities. This aims to provide a full overview of key findings from phase one, allowing for an understanding of the key drivers and barriers to solutions progress.

Table: Key Summary Indicators – DSP Survey (phase one cities)

State	Banadir Regional Administration				South-West State						Jubaland					
City	Daynile		Kahda		Baidoa		Berdaale		Xudur		Doolow		Kismaayo		Baardheere	
Population group	IDP	HC	IDP	HC	IDP	HC	IDP	HC	IDP	HC	IDP	HC	IDP	HC	IDP	HC
IASC 1. Safety and Security	88%	89%	78%	89%	92%	94%	90%	88%	93%	96%	98%	95%	91%	87%	83%	86%
IRIS sub-criteria 1.1 Victims of Violence	92%	93%	93%	93%	82%	83%	77%	87%	88%	95%	97%	94%	86%	76%	67%	77%
IRIS sub-criteria 1.2 Freedom of Movement	89%	92%	79%	92%	93%	94%	94%	90%	94%	95%	99%	98%	95%	94%	90%	91%
IRIS sub-criteria 1.3 Protection Mechanisms	1%	2%	2%	2%	11%	12%	12%	7%	9%	3%	2%	1%	5%	7%	22%	17%
IRIS sub-criteria 1.4 Disaster Risk Reduction	19%	26%	15%	26%	48%	48%	39%	17%	18%	12%	25%	14%	33%	39%	31%	24%
IASC 2. Adequate Standard of Living	62%	93%	62%	93%	65%	83%	40%	65%	52%	89%	74%	95%	54%	92%	43%	88%
IRIS sub-criteria 2.1 Food Security	26%	73%	42%	73%	27%	42%	43%	36%	29%	37%	18%	42%	20%	45%	10%	20%
IRIS sub-criteria 2.2 Shelter and Housing	25%	89%	17%	89%	42%	85%	2%	56%	4%	95%	17%	83%	39%	94%	10%	89%
IRIS sub-criteria 2.3 Medical Services	59%	86%	55%	86%	68%	55%	40%	52%	84%	81%	73%	90%	57%	69%	40%	58%
IRIS sub-criteria 2.4 Water	88%	95%	78%	95%	68%	79%	53%	68%	70%	80%	90%	91%	69%	88%	55%	82%
IRIS sub-criteria 2.5 Education	36%	72%	33%	72%	56%	65%	44%	41%	59%	78%	75%	89%	32%	55%	41%	52%
IRIS sub-criteria 2.6 Access to electricity	54%	90%	59%	90%	54%	73%	26%	61%	12%	41%	53%	84%	47%	89%	64%	83%
IASC 3. Access to Livelihoods	13%	56%	13%	56%	39%	53%	44%	33%	25%	42%	21%	44%	19%	51%	29%	41%
IRIS sub-criteria 3.1 Employment and Livelihoods	6%	33%	9%	33%	24%	39%	31%	25%	14%	30%	13%	29%	5%	27%	28%	37%
IRIS sub-criteria 3.2 Economic Security	7%	41%	4%	41%	18%	22%	17%	15%	12%	20%	9%	29%	15%	40%	3%	11%



State	Banadir Regional Administration				South-West State						Jubaland					
City	Daynile		Kahda		Baidoa		Berdaale		Xudur		Doolow		Kismaayo		Baardheere	
Population group	IDP	HC	IDP	HC	IDP	HC	IDP	HC	IDP	HC	IDP	HC	IDP	HC	IDP	HC
IASC 4. Housing and Land Proterities (HLP)	32%	59%	48%	59%	68%	81%	50%	55%	53%	71%	77%	89%	62%	79%	37%	56%
IRIS sub-criteria 4.1. Land documentation and eviction risk	32%	59%	48%	59%	68%	81%	50%	55%	53%	71%	77%	89%	62%	79%	37%	56%
IASC 5. Access to Documentation	2%	33%	6%	33%	15%	27%	1%	11%	3%	16%	15%	48%	19%	36%	14%	49%
IRIS sub-criteria 5.1 Documentation	2%	33%	6%	33%	15%	27%	1%	11%	3%	16%	15%	48%	19%	36%	14%	49%
IASC 6. Family Reunificatio	98%	97%	96%	97%	90%	94%	96%	99%	98%	98%	98%	96%	90%	96%	91%	92%
IRIS sub-criteria 6.1 Voluntary Reunification (no forced separation)	97%	94%	93%	94%	76%	78%	80%	93%	90%	92%	95%	93%	80%	89%	61%	77%
IRIS sub-criteria 6.2 Reunification and tracing services	98%	97%	96%	97%	90%	94%	96%	99%	98%	98%	98%	96%	90%	96%	91%	92%
IASC 7. Participation in Public Affair	9%	12%	16%	12%	33%	32%	12%	23%	25%	31%	21%	27%	16%	26%	62%	66%
IRIS sub-criteria 7.1 Public Affair	1%	1%	2%	1%	2%	2%	1%	1%	8%	8%	4%	3%	4%	3%	2%	1%
IRIS sub-criteria 7.3 Right to engage in public service	8%	11%	14%	11%	32%	31%	11%	22%	18%	30%	19%	26%	13%	25%	61%	66%
IASC 8. Access to E ective Remedies and Justice	85%	94%	93%	94%	98%	92%	97%	96%	94%	90%	99%	100%	95%	97%	90%	90%
IRIS sub-criteria 8.1 Remedies and Justice	85%	94%	93%	94%	98%	92%	97%	96%	94%	90%	99%	100%	95%	97%	90%	90%
Positive feelings of integration	67%	74%	72%	74%	67%	67%	51%	40%	69%	75%	76%	76%	71%	81%	31%	41%





DANWADAAG
Towards Durable Solutions to Displacement

 **IOM** | GLOBAL DATA INSTITUTE
UN MIGRATION | DISPLACEMENT
TRACKING MATRIX

SAAMEYNTA 



Norwegian Ministry
of Foreign Affairs



Government of the Netherlands



Schweizerische Eidgenossenschaft
Confédération suisse
Confederazione Svizzera
Confederaziun svizra

Swiss Agency for Development
and Cooperation SDC



Foreign, Commonwealth
& Development Office



Funded by the
European Union



Internal Displacement
Solutions Fund